

Guardian Sensors

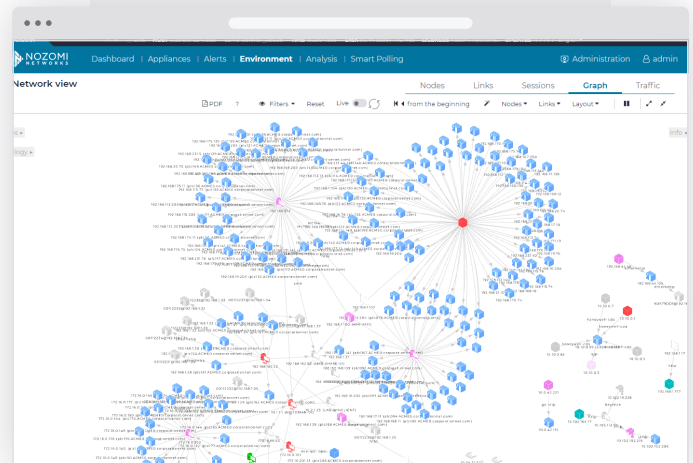
See, secure and monitor all your ICS, OT, IoT, IT, edge and cloud assets.

In order to reach every corner of your network, Guardian sensors are available in a wide range of hardware as well as virtual and containerized sensors.

We offer multiple options for deployment and support assistance, including:

- **Global Strategic Alliance Partners**
- **SI/VARs**
- **Professional Services**
- **Global Customer Support**

Nozomi Networks provides detailed insight into OT, IoT and IT networks. Drill down to individual network sessions or take a bird's eye view of your entire environment.



Real-time network visualization helps to quickly highlight issues.

Guardian Sensors for the Large Enterprise



NSG-HS Series

Rack-mounted sensors for real-time OT/IoT visibility, cybersecurity and monitoring.

- ◆ 300,000 - 500,000 Nodes
- ◆ 6 Gbps Max. Throughput



NSG-H Series

Rack-mounted sensors for real-time OT/IoT visibility, cybersecurity and monitoring.

- ◆ 100,000 - 200,000 Nodes
- ◆ 3 Gbps Max. Throughput

	NSG-HS 3500	NSG-HS 3000	NSG-H 2500	NSG-H 2000
Max. Protected Nodes	500,000	300,000	200,000	100,000
Max. Protected Network Elements ¹	2,000,000	1,500,000	1,200,000	1,000,000
Max. Protected Smart IoT Devices ²	3,000,000	1,800,000	1,200,000	600,000
Max. Throughput ³	6 Gbps		3 Gbps	
Max. Remote Collectors ⁴	50		50	
Monitoring Ports	Modular up to 16+1		Modular up to 8+1	
Management Ports	1x1000Base-T		1x1000Base-T	
Expansion Slots	4 slots available: 4x1000BaseT 4xSFP 4xSFP+		2 slots available: 4x1000BaseT 4xSFP 4xSFP+	
Storage	512 GB		512 GB	
Form Factor	1 rack unit		1 rack unit	
Max. Power Consumption	750 W		750 W	
Power Supply	100-240V AC - 50/60Hz, 36-72V DC, Dual		100-240V AC - 50/60Hz, 36-72V DC, Dual	
Temperature Range	0 / +40° C		0 / +40° C	
HxWxL (mm/in)	44 x 438 x 600 / 1.73 x 17.24 x 23.60		44 x 438 x 600 / 1.73 x 17.24 x 23.60	
Weight	18 Kg		17 Kg	
Certifications	CE, FCC, UL		CE, FCC, UL	

¹ Network Elements: The sum of nodes, links, variables. ² Smart IoT Devices: The concept of "Smart IoT device" covers devices communicating in an intermittent way and resulting in low throughput. ³ All performance values are "up to" and vary depending on the analyzed traffic. ⁴ See Remote Collector tech specs for more details. For complete and current tech specs, visit: nozominetworks.com/techspecs, or contact us.

Guardian Sensors for the Mid-Enterprise



NSG-M Series

Rack-mounted sensors for real-time OT/IoT visibility, cybersecurity and monitoring.

- ◆ 10,000 - 40,000 Nodes
- ◆ 1 Gbps Max. Throughput



NSG-L Series

Rack-mounted sensors for real-time OT/IoT visibility, cybersecurity and monitoring.

- ◆ 1,000 - 5,000 Nodes
- ◆ 250 - 500 Mbps Max. Throughput

	NSG-M 1000	NSG-M 750	NSG-L 250	NSG-L 100
Max. Protected Nodes	40,000	10,000	5,000	1,000
Max. Protected Network Elements ¹	600,000	200,000	90,000	20,000
Max. Protected Smart IoT Devices ²	200,000	50,000	20,000	5,000
Max. Throughput ³	1 Gbps		500 Mbps	250 Mbps
Max. Remote Collectors ⁴	50		20	
Monitoring Ports	7x1000Base-T + 4xSFP		5x1000Base-T	
Management Ports	1x1000Base-T		1x1000Base-T	
Expansion Slots	1 slot available: 4x1000Base-T 4xSFP 4xSFP*		1 slot available: 4x1000Base-T 4xSFP	
Storage	256 GB		64 GB	
Form Factor	1 rack unit		1 rack unit	
Max. Power Consumption	360W		250W	
Power Supply	100-240V AC - 50/60 Hz, Single		100-240V AC - 50/60 Hz, Single	
Temperature Range	0 / +45° C		0 / +45° C	
HxWxL (mm/in)	44 x 438 x 429 / 1.73 x 17.24 x 16.89		44 x 438 x 300 / 1.7 x 17.2 x 11.8	
Weight	14 Kg		8 Kg	
Certifications	CE, FCC, UL		CE, FCC, UL	

¹ Network Elements: The sum of nodes, links, variables. ² Smart IoT Devices: The concept of "Smart IoT device" covers devices communicating in an intermittent way and resulting in low throughput. ³ All performance values are "up to" and vary depending on the analyzed traffic. ⁴ See Remote Collector tech specs for more details. For complete and current tech specs, visit: nozominetworks.com/techspecs, or contact us.

Guardian Sensors for Specialized Requirements



Ruggedized Series

Ruggedized sensors for real-time OT/IoT visibility, cybersecurity and monitoring.

- ◆ 500 - 5,000 Nodes
- ◆ 100 - 250 Mbps Max. Throughput



Portable

Portable sensor for real-time OT/IoT visibility, cybersecurity and monitoring.

- ◆ 2,500 Nodes
- ◆ 200 Mbps Max. Throughput

	NG-500R	NSG-R 50	P550
Max. Protected Nodes	5,000	500	2,500
Max. Protected Network Elements ¹	80,000	10,000	50,000
Max. Protected Smart IoT Devices ²	30,000	2,500	12,500
Max. Throughput ³	800 Mbps	100 Mbps	200 Mbps
Max. Remote Collectors ⁴	30	10	Not available
Monitoring Ports	3x1000BASE-T	4x1000BASE-T	5x1000BASE-T
Management Ports	1x1000Base-T		1x1000Base-T
Expansion Slots	2	Not available	Not available
Storage	256 GB (Redundant Data Partition)	64 GB	256 GB
Form Factor	3 rack unit	DIN mountable	Desktop with wall mount kit
Max. Power Consumption	115W	60W	38W
Power Supply	100-240V AC, 100-240V DC, Dual	100-240V AC, 12-36V DC, Single (External PSU)	90-240V AC, 12-30V DC, Single (External PSU)
Temperature Range	-40° C / +70° C (Max 40° C with SFP NIC)	-40 / +75° C	0 / +60° C
HxWxL (mm/in)	131.8x438x300.1 5.18x17.2x11.8	80 x 130 x 146 3.15 x 5.11 x 5.74	70 x 180 x 240 2.75 x 7.08 x 9.44
Weight	8.5 Kg / 18.74 Lb	3 Kg	2.5 Kg
Certifications	CE, FCC, UL		FCC

¹ Network Elements: The sum of nodes, links, variables. ² Smart IoT Devices: The concept of "Smart IoT device" covers devices communicating in an intermittent way and resulting in low throughput. ³ All performance values are "up to" and vary depending on the analyzed traffic. ⁴ See Remote Collector tech specs for more details. For complete and current tech specs, visit: nozominetworks.com/techspecs, or contact us.

Guardian Sensors for Remote Sites



Remote Collector

Low-resource sensors that collect asset and network data in remote locations and send it to Guardian for further analysis.

◆ Up to 15 Mbps Throughput

	NRC-5
Max. Throughput	Up to 15 Mbps
Remote Collector Support	Not available
Monitoring Ports	2x1000Base-T, 1xSFP
Management Ports	1x1000Base-T
Expansion Slots	Not available
Storage	8 GB
Form Factor	DIN mountable
Max. Power Consumption	12W
Power Supply	100-240VAC, 12-36V DC, Single (External PSU)
Temperature Range	-40 / +70° C
Heat Generation	55.44 BTU/hr
HxWxL (mm/in)	78 x 146 x 127 / 3.07 x 6.67 x 5.00
Weight	1.2 Kg
Compliance	RoHS
Certifications	CE, FCC, UL
	Virtual Remote Collector
Max. Throughput	15 Mbps
Deployment Options	Hyper-V 2012+, KVM 1.2+, VMware ESX 5.x+, XEN 4.4+

For complete and current tech specs, visit: nozominetworks.com/techspecs, or contact us.

Guardian Sensors for Virtual Environments and Containers

Virtual Series

Virtual sensors for real-time OT/IoT visibility, cybersecurity and monitoring.

- ◆ 1,000 - 40,000 Nodes
- ◆ 1 Gbps Max. Throughput

	V1000	V750	V250	V100
Max. Protected Nodes	40,000	10,000	5,000	1,000
Max. Protected Network Elements ¹	400,000	200,000	100,000	20,000
Max. Protected Smart IoT Devices ²	200,000	100,000	25,000	5,000
Max. Throughput ³	1 Gbps	1 Gbps	1 Gbps	1 Gbps
Scenarios	Enterprise	Large	Medium	Small
Deployment Options	Hyper-V 2012+, KVM 1.2+, VMware ESX 5.x+, XEN 4.4+			
Max. Remote Collectors ⁴	50	50	20	20

¹ Network Elements: The sum of nodes, links, variables. ² Smart IoT Devices: The concept of "Smart IoT device" covers devices communicating in an intermittent way and resulting in low throughput. ³ Performance is dependent upon hardware configuration and resource allocation. ⁴ See Remote Collector tech specs for more details. For complete and current tech specs, visit: nozominetworks.com/techspecs, or contact us.

Container Edition

Embedded container sensor for switches, routers and other security infrastructure. Fast, flexible deployment option that leverage your existing devices.

- ◆ Available for Guardian with the Smart Polling add-on module only

	Container
Embedded Offerings	Gatewatcher, Siemens RUGGEDCOM
Add-ons	Smart Polling module: <i>included</i> Threat Intelligence and Asset Intelligence subscriptions: <i>can be added</i>
Remote Collector Support	Not available

For complete and current tech specs, visit: nozominetworks.com/techspecs, or contact us.

Nozomi Networks accelerates digital transformation by protecting the world's critical infrastructure, industrial and government organizations from cyber threats. Our solution delivers exceptional network and asset visibility, threat detection, and insights for OT and IoT environments. Customers rely on us to minimize risk and complexity while maximizing operational resilience.

